



Scripps Institution of Oceanography

Benthic Invertebrate Collection
(SIO-BIC)

Pelagic Invertebrate Collection
(SIO-PIC)



Greg Rouse
Curator



Charlotte Seid
Collection Manager



Mark Ohman
Curator



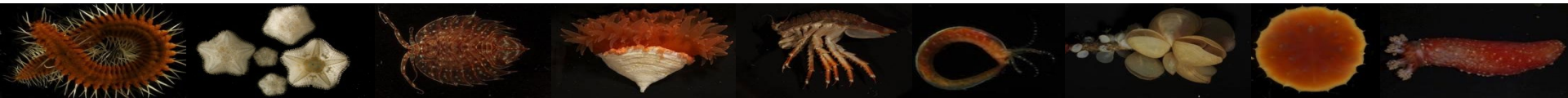
Moira Décima
Incoming Curator



Linsey Sala
Collection Manager



UC San Diego

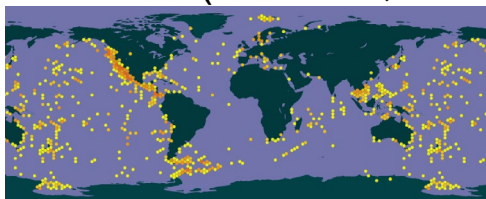
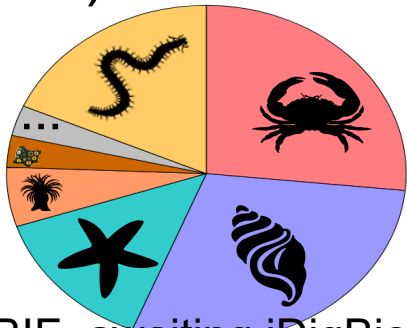




Scripps Institution of Oceanography

Benthic Invertebrate Collection
(SIO-BIC)

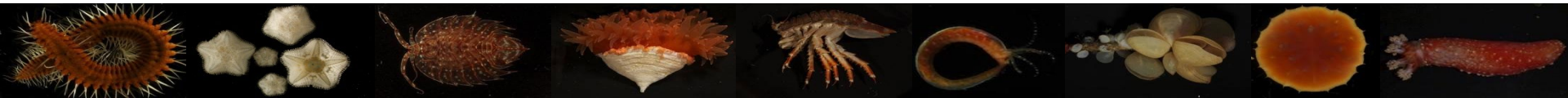
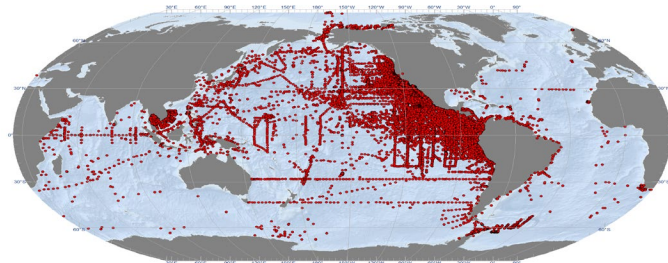
DigIn target:
29,300 lots
>6,000 images
Databased:
>34,000 lots (on GBIF, awaiting iDigBio)



Pelagic Invertebrate Collection
(SIO-PIC)

DigIn target: Digitized (50% need georeferencing)
34,400 lots **21,600 lots**

Parent net tows databased (140,000):





Scripps Institution of Oceanography

What will be easy?

Recruiting motivated student workers

What will be hard?

Initial hands on time investment of establishing a workflow and training students

Determining best catalog/barcode IDs that includes diff. types of legacy catalog IDs and streamlines trackability

What makes us most anxious?

BIC: large jars full of tiny nested vials; finding all of Greg's photos

PIC: time needed to obtain and connect ref. specimen associated data from parent net to

